

Z 7.1
C 4

CITY OF
CHRISTCHURCH
NEW ZEALAND.



1905-6

CALENDAR—May 1st, 1905, to April 30th, 1906.

1905.

MAY		JUNE		JULY		AUGUST		SEPTEMBER		OCTOBER	
S	7142128	S	4111825	S	219162330	S	6132027	S	3101724	S	18152229
M	8152229	M	5121926	M	310172431	M	7142128	M	4111825	M	29162330
W	9162330	W	6132027	W	4111825	W	8152229	W	5121926	W	310172431
Th	310172431	Th	7142128	Th	5121926	Th	29162330	Th	6132027	Th	4111825
F	4111825	F	8152229	F	6132027	F	310172431	F	7142128	F	5121926
S	5121926	S	29162330	S	7142128	S	4111825	S	8152229	S	6132027
S	6132027	S	3101724	S	18152229	S	5121926	S	29162330	S	7142128

1905.

NOVEMBER		DECEMBER	
S	5131926	S	310172431
M	6132027	M	4111825
W	7142128	W	5121926
Th	8152229	Th	6132027
F	9162330	F	7142128
S	3101724	S	8152229
S	4111825	S	29162330

1906.

JANUARY		FEBRUARY		MARCH		APRIL	
S	17142128	S	4111825	S	..4111825	S	18152229
M	8152229	M	2121926	M	..5121926	M	29162330
W	29162330	W	9132027	W	..6132027	W	3101724
Th	310172431	Th	7142128	Th	..7142128	Th	4111825
F	4111825	F	8152229	F	..8152229	F	5121926
S	5121926	S	29162330	S	..29162330	S	6132027
S	6132027	S	3101724	S	..310172431	S	7142128

CITY
OF
CHRISTCHURCH

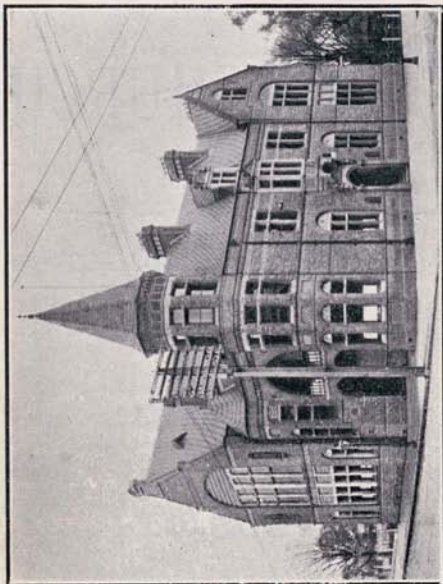
NEW ZEALAND.



1905-6.

CHRISTCHURCH, N.Z.:
Christchurch Press Company Limited, Printers.

Z 7.1
C 4
NOV 20 1916
1 228



CITY COUNCIL CHAMBERS.

CANTERBURY PUBLIC LIBRARY

Christchurch City Council

NEW ZEALAND.

1905

MAYOR :

C. M. GRAY, Esq.

COUNCILLORS :

Central Ward—

W. H. Cooper, T. Gapes, S. Hurst-Seager, H. H. Loughnan, J. Orchard, G. Payling.

Linwood Ward—

T. N. Horsley, H. J. Otley.

St. Albans Ward—

G. B. Chick, W. J. Neate.

Sydenham Ward—

C. Allison, J. Hadfield, B. P. Manhire, G. W. J. Parsons.

The Council meets every alternate Monday, at 7.30 p.m.

OFFICERS :

Town Clerk and City Treasurer—

H. R. Smith.

City Surveyor :

A. Dudley Dobson, M. Inst. C.E.

Chief Clerk—J. S. Neville.

Accountant—J. Anderson.

Collector—W. Smith.

Chief Inspector—C. B. Massey.

Assistant Inspectors—B. Throp, A. Batten, L. Hardie, J. P. Young.

Electrical Engineer—W. D. Wilkinson.

OFFICERS—Continued.

Abattoir Manager—A. Crabb, M.R.C.V.S.

Chief Officer of Fire Brigade—E. Smith.

Draughtsman—C. Dawe.

Shorthand Clerk and Typist—

F. Hadfield.

Junior Clerk—L. Atkinson.

Cadet—L. Keig.

Messenger—V. Esselborn.

Inspector of Buildings—A. Batten.

Foremen of Works—

Central Ward	..	J. C. Cameron
Linwood	..	H. Fabling
St. Albans	..	G. G. Davidson
Sydenham	..	H. Simpson

PAST MAYORS.

1868	W. WILSON
1869	J. ANDERSON
1870	A. DUNCAN
1871	J. P. JAMESON
1872	H. SAWTELL
1873	E. B. BISHOP
1874	M. B. HART
1875-76	F. HOBBS
1877	J. GAPES
1878	H. THOMSON
1879-1880	C. T. ICK
1881	J. GAPES
1882-3	J. G. RUDDENKLAU
1884-5	C. P. HULBERT
1886-7	A. AYERS
1888-9	C. LOUISSON
1890	S. MANNING
1891	C. M. GRAY
1892	W. PRUDHOE
1893	EDEN GEORGE
1894	T. GAPES
1895	W. H. COOPER
1896	H. J. BESWICK
1897	W. H. COOPER
1898-9	C. LOUISSON
1900	W. REECE
1901	A. E. G. RHODES
1902	H. F. WIGRAM

GREATER CHRISTCHURCH CONSTITUTED, 1903.

1903	H. F. WIGRAM
1904	C. M. GRAY



VICTORIA STATUE ON EMPIRE DAY.

COMMITTEES.

Abattoir—His Worship the Mayor, Councillors Cooper (Chairman), Payling, Allison and Chick.

By-Laws—His Worship the Mayor, Councillors Loughnan (Chairman), Otley, Parsons, Hurst-Seager and Orchard.

Finance and Departmental—His Worship the Mayor, Councillors Hadfield (Chairman), Neate, Otley, Payling and Orchard.

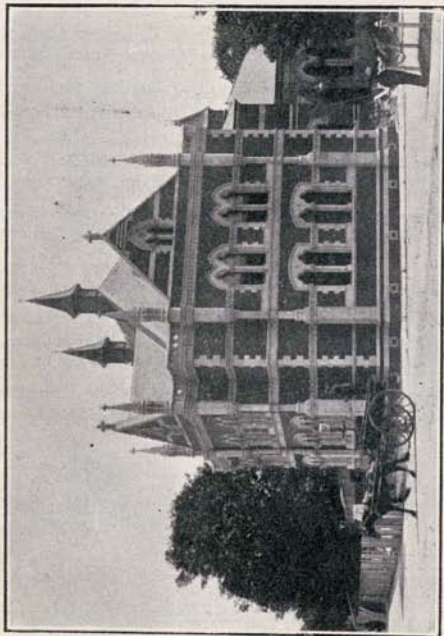
Fire Brigade—His Worship the Mayor, Councillors Neate (Chairman), Parsons, Gapes and Horsley.

Reserves and Cemeteries—His Worship the Mayor, Councillors Payling (Chairman), Manhire, Parsons, Chick and Hurst-Seager

Sanitary—His Worship the Mayor, Councillors Gapes (Chairman), Allison, Cooper and Horsley

Sydenham Water Supply—His Worship the Mayor, Councillors Hadfield (Chairman), Allison, Manhire and Parsons.

Works and Lighting—His Worship the Mayor, Councillors Otley (Chairman), Cooper, Loughnan, Hadfield, Manhire and Chick.



THE PUBLIC LIBRARY AND READING ROOMS

CITY COUNCIL REPRESENTATIVES.

CHARITABLE AID BOARD :

Councillor Cooper, Mr. W. E. Samuels, Mrs. Henderson and Mrs. Wells.

HOSPITAL BOARD :

Councillors Loughnan, Hadfield, and Payling, and Mr. H. B. Sorensen.

CHRISTCHURCH DOMAIN BOARD :

His Worship the Mayor, Councillors Cooper and Manhire, Mr. H. J. Beswick.

SAMARITAN HOME TRUSTEE :

Mr. H. B. Sorensen.

CASHMERE HILLS DOMAIN BOARD :

His Worship the Mayor and Mr. C. D. Morris.

THE MUNICIPAL ASSOCIATION OF NEW ZEALAND :

His Worship the Mayor,
Councillor Loughnan and the Town Clerk.

CHRISTCHURCH FIRE BRIGADE.

ESTABLISHED 1860.

STAFF :

- Chief Officer—E. Smith.
3 Engineers—A. Stewart, A. C. Shore and D. G. Maindonald
3 Assistant Engineers
6 Foremen
32 Firemen
4 Caretakers
6 Horse Drivers
6 Relief Drivers

STATIONS :

- 2 in Central Ward—Chester and Lichfield Streets
1 in Sydenham Ward
1 in St. Albans Ward

PLANT :

- 3 Steam Fire Engines—one 450 gallons, one 300 gallons,
and one 260 gallons per minute.
3 Chemical Engines—two double cylinder, one single
cylinder
1 Manual Engine
2 Fire Escapes—one 65 feet, one 40 feet
100 Feet of Ladders
9,000 Feet of Hose

ALARMS :

- 4 Large Bells in Towers.
27 Alarm Boxes.

WATER SUPPLY :

Open Tanks, Underground Tanks, Wells and River.

The City has the use of the Railway large Steam Fire Engine, 1,350 gallons per minute.

CANTERBURY PUBLIC LIBRARY, ABATTOIRS,

SITUATED AT

SOCKBURN.

Area—54a. 2r. 13p. Cost—£20,000

Inspector and Manager :

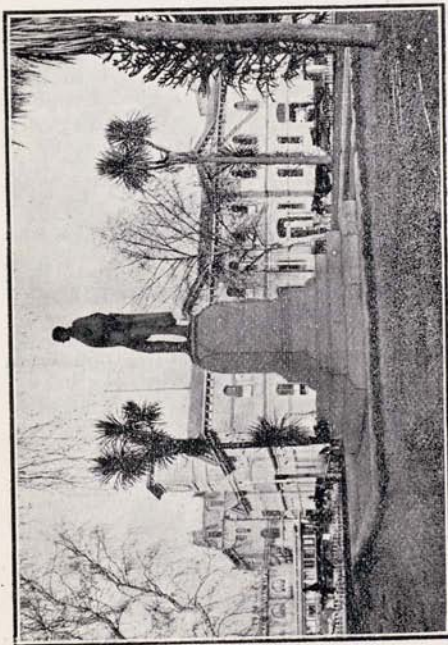
A. Crabb. M.R.C.V.S.

CITY SINKING FUND COM- MISSIONERS :

Messrs. H. J. Beswick, W. H. Hargreaves, T. N. Horsley,
J. R. Brunt, A. Marshall.

CITY SOLICITORS :

Messrs, Garrick, Cowlshaw and Fisher.



THE GODLEY STATUE AND THE CHIEF POST OFFICE

STATUTORY MEETINGS, ANNUAL ELECTIONS, &c.

May.

Installation of Mayor, first Wednesday.

November.

Annual Election of Representatives on Hospital and Charitable Aid Boards, fourth Wednesday.

December.

Date of Conference under "The Shops and Offices Act" to be fixed, first Council Meeting.

January.

Conference of Delegates to be held, to determine the day on which the weekly half-holiday shall be observed.

March.

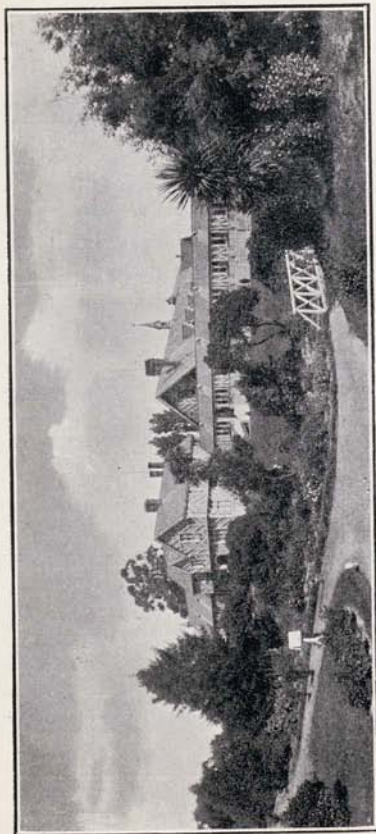
District Electors List prepared, 5th
Objections received to, 17th
District Electors' List signed, 4th Wednesday.
Annual Balance, 31st.

April.

District Electors' List comes into force on 1st.
Annual Election of Mayor, last Wednesday.
Biennial Election of Councillors, last Wednesday.

CANTERBURY PUBLIC LIBRARY

MUNICIPAL RESERVES.



THE HOSPITAL

WITHIN THE CITY.

	A.	R.	P.
Cranmer Square Reserve	4	1	24
Latimer Square Reserve	4	1	24
Library, Waltham Road	0	0	36
Poulson Street, Reserve	1	1	11
Recreation Reserve, Colombo Street	14	0	1
Recreation Reserve Jerrold Street	5	0	0
River Banks Reserves	10	3	9
Victoria Square Reserve (Market)	3	3	21

OUTSIDE THE CITY.

Bottle Lake	818	1	13
Bromley, Nightsoil	30	0	0
Bromley Slaughterhouse	6	0	0
Bromley Smallpox Hospital	22	0	0
Cairnbrae	449	0	0
Cairnbrae	398	2	34
Chaney's, Nightsoil	936	1	32
Chaney's, Sewage	160	0	0
Chaney's Sewage	40	0	0
Christchurch Cemetery	25	3	7
Geraldine	2,000	0	0
Lyndhurst	345	0	0
New Brighton, planting	516	0	21
Rakaia, shingle	100	2	20
Shirley	30	0	0

REAL ESTATE.

	A.	R.	P.
Central Yard, Armagh, Manchester and Gloucester Streets	2	0	36
Fire Brigade Station, Lichfield Street	0	0	36½
Stone Yard, South Belt	1	0	1
Abattoirs, Sockburn	54	2	13
Yard and Offices, Worcester Street, Linwood	0	0	37
Stone Yard, Ferry Road, Linwood	0	1	22
Yard and Fire Brigade Station, Papanui Road, St. Albans	0	2	22 ⁵ / ₁₀
Gravel Pit, Strowan, St. Albans	1	1	0
Cemetery, Milton Street, Spreydon	17	1	2
Offices, Elgin Street, Sydenham	0	1	0
Yard, Colombo Street, Sydenham	0	1	0
Baths, Waverley Street, Sydenham	0	0	16
Fire Brigade Station and Offices, Colombo Street, Sydenham	4	2	8
Stone Yard, Huxley Street, Sydenham	1	1	0
Queen Street, Sydenham	0	0	16

PUBLIC PARKS.

Linwood Park	21	0	0
St. Albans Park	15	3	17
Sydenham Park	14	0	1

CITY RATES.

RATEABLE VALUE.

Capital: £7,135,531. Unimproved £3,093,157.

CENTRAL WARD.

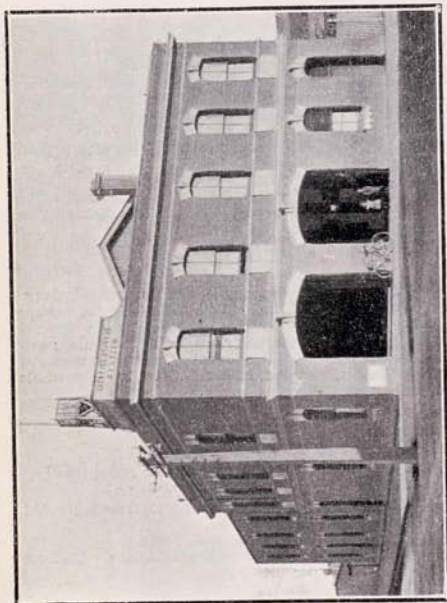
General 2³/₄d. in the £ on Unimproved Value.
 Hospital and Charitable Institutions and Charitable Aid, ¹/₄d. in the £ on Capital Value.
 Special (within original boundaries only) ³/₄d. in the £ on Unimproved Value.
 Special (within original boundaries only) ¹/₂d. in the £ on Unimproved Value.
 Special ³/₄d. in the £ on Unimproved Value.
 Special (that portion formerly known as Richmond), ³/₄d. in the £ on Unimproved Value, Uniform Annual Fee, 2os. per Closet pan.

In addition to the above, the Christchurch Drainage Board levies a General Rate of ¹/₄d. in the £ in the Sewage area, ¹/₂d. in the £ in the Rural Area, and a Special Rate of ³/₄d. in the £ (within original boundaries only); and the South Waimakariri River Board a General Rate of ³/₄d. in the £, Class 1, and ¹/₂d. in the £, Class 2. The whole are on the Capital Value.

LINWOOD WARD.

General 2¹/₄d. in the £ on Unimproved Value.
 Hospital and Charitable Institutions and Charitable Aid ¹/₄d. in the £ on Capital Value.
 Special ³/₄d. in the £ on Unimproved Value.
 Special ¹/₂d. in the £ on Unimproved Value. Uniform Annual Fee 9s. per Closet Pan.

In addition to the above the Christchurch Drainage Board levies a General Rate of ¹/₄d. in the £ in the Sewage Area, and ¹/₂d. in the £ in the Rural Area; the South Waimakariri River Board a General Rate of ³/₄d. in the £. The whole are on the Capital Value.



FIRE BRIGADE STATION, LICHFIELD STREET.

CITY RATES.

ST. ALBANS WARD.

General, $2\frac{1}{2}$ d. in the £ on Unimproved Value.
 Hospital and Charitable Institutions and Charitable Aid,
 $\frac{1}{4}$ d. in the £ on the Capital value.
 Special (special district), $\frac{1}{8}$ d. in the £ on Unimproved
 Value.
 Special (special district), $1\frac{1}{4}$ d. in the £ on Unimproved
 Value.
 Uniform Annual Fee, 8s. 10d. per closet pan.

In addition to the above, the Christchurch Drainage
 Board levies a General Rate of $\frac{1}{4}$ d. in the £ in the Sewage
 Area, and $\frac{1}{8}$ d. in the £ in the Rural Area; the South Wai-
 makariri River Board a General Rate of $\frac{1}{8}$ d. in the £,
 Class 1, and $\frac{1}{16}$ d. in the £, Class 2. The whole are on the
 Capital Value.

SYDENHAM WARD.

General, $3\frac{1}{2}$ d. in the £ on Unimproved Value.
 Hospital and Charitable Institutions and Charitable Aid
 $\frac{1}{4}$ d. in the £ on the Capital Value.
 Special $\frac{3}{4}$ d. in the £ on Unimproved Value.
 Uniform Annual Fee, 11s. 6d. per closet pan.

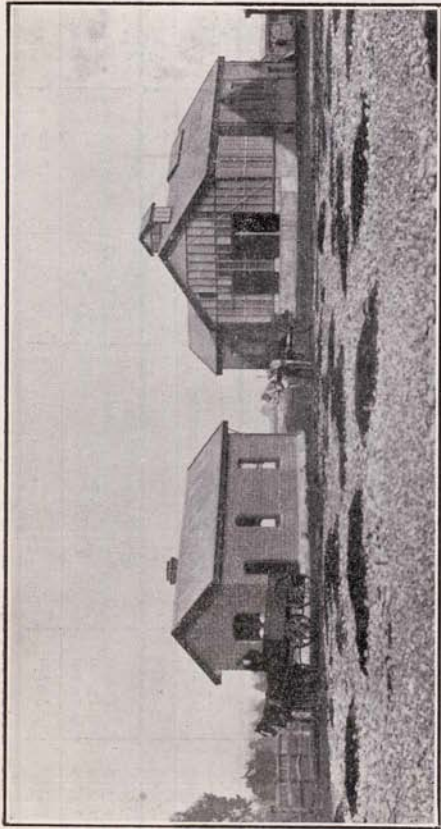
In addition to the above, the Christchurch Drainage
 Board levies a General Rate of $\frac{1}{4}$ d. in the £ in the Sewage
 Area, and $\frac{1}{8}$ d. in the £ in the Rural Area.; the South Wai-
 makariri River Board a General Rate of $\frac{1}{8}$ d. in the £.
 The whole are on the Capital Value.

LOANS.—Central Ward.

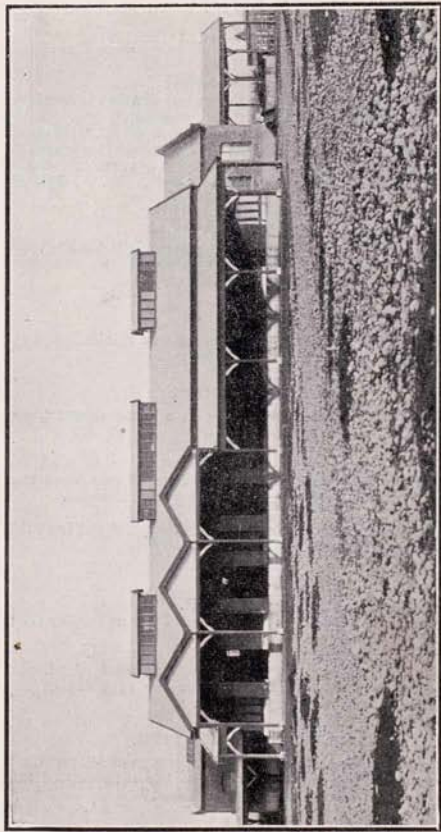
AMOUNT AUTHORISED	AMOUNT RAISED	PURPOSE.	RATE OF INTEREST	ACCRUED SINKING FUND	DATE OF MATURITY
£ 35,000	£ 35,000	Drainage.	6 per cent.	£ s. d.	1922—1924
25,000	25,000	Public Works.	5 "	25,025 5 8	1935
6,000	6,000	Municipal Offices.	4 "	5,759 7 0	1906
1,640	1,640	Richmond Ward Channelling	4 "	Nil.	1928
35,000	35,000	Central Yard, Bridges and Re- payment of Overdraft	4 "	110 7 2	1930
18,500	18,500	Destructor, Sanitary Works.	4 "	Nil.	1930
20,273	20,273	Abattoir.	4 "	Nil.	1935—6
141,413	141,413			31,494 19 10	

LOANS.

AMOUNT AUTHORISED	AMOUNT RAISED	PURPOSE.	RATE OF INTEREST	ACCRUED SINKING FUND	DATE OF MATURITY
£ 275	£ 275	LINWOOD WARD. Constructing Brick Sewer Purchase of Recreation Ground Public Works	5 per cent.	£ s. d.	1919
1,200	1,200		4 $\frac{1}{2}$ "	54 1 3	1920
11,182	10,500		4 $\frac{1}{2}$ "	219 14 3	401 5 5
12,657	11,975			675 0 11	
3,000	3,000	ST. ALBANS WARD. Channelling Channelling and Kerbing	4 per cent.	Nil.	1923
23,000	22,550		4 "	Nil.	1918
26,000	25,550				
25,000	25,000	SYDENHAM WARD. Channelling and Ashpalt Waterworks Public Works	5 per cent.	1,747 16 4	1935
13,000	13,000		4 "	Nil.	1921
10,000	10,000		4 "	Nil.	1921
50,000	50,000			1,747 16 4	



CITY ABATTOIR—OFFICE AND PIG-SLAUGHTERHOUSE



CITY ABATTOIR—SHEEP AND CATTLE SLAUGHTER-HOUSE

336144

MISCELLANEOUS INFORMATION.

CEMETERIES.

There are two Public Cemeteries, one situated at Bromley, in the Heathcote Road District, containing 25A. 3R. 7P. and about 2½ miles from Cathedral Square. L. D. Hughes, Sexton; H. Round, Assistant The other is situated in Milton Street, Spreydon and contains 17A. 1R. 2P., and is about 3 miles from Cathedral Square. W. H. French, Sexton

TRAMWAYS.

The Tramways are under the control of the Christchurch Tramway Board. Chairman—W. Reece, Esq.; Secretary F. Thompson Engineer, F. H. Chamberlain.

GAS.

The City Gasworks are in the hands of a Public Company. Price of Gas, 5s. 9d. per 1,000 feet net.

DESTRUCTOR.

The City Refuse is destroyed in a Beaman and Dee's Two-unit Destructor.

The Steam produced at the Destructor is used for operating an Electrical Plant, consisting of two generating units of 100 kilowatts each, and one of 150 kilowatts.

The Electric Current is sold for lighting and power at the following rates—

LIGHTING

For the first 500 Units, 7d. per Unit.
For each additional Unit over the first 500 and under 1000 5d. per Unit
For each additional Unit over the first 1000, 4½d.

The above rates are subject to a discount of 1d. per Unit on accounts paid on or before the 14th day of the month. Minimum charge 4 Units.

POWER AND HEATING.

Three-pence per Unit subject to a discount of ½d. per Unit on Accounts paid on or before the 14th day of the month. Minimum charge 16 Units.

SUBSIDY TO BANDS.

The Council spends £200 annually in subsidising 4 Bands to give Open Air Concerts in the Rotundas.

AREA OF CITY—4,598 Acres.

POPULATION—48,767

MILES OF STREETS—12½.

TELEPHONE NUMBERS.

MEMO

MAYOR AND COUNCILLORS.

NAME.	OFFICE	HOUSE
His Worship the Mayor	1306	1328
Councillor Chick	1389
" Cooper	463
" Gapes	710	..
" Horsley	272	..
" Hurst-Seager	456	..
" Loughnan	449	706
" Manhire	1067
" Neate	450	1506
" Otley	578
" Parsons	1203	1206
" Payling	321	453

PRINCIPAL OFFICERS, ETC.

OFFICE AND YARD.

	OFFICE	HOUSE
Town Clerk	807	867
City Surveyor	1306	1370
City Solicitor	163	..
Electrical Engineer	1304	..
Council Chambers	807	..
" Yard	1304	..

